

Flat 50 Pearson Building, 8 Station Road, Croydon, Croydon, CR0 2YT

£1,850 Per Month

- This new property offers fully furnished high-quality accommodation comprising Two double bedrooms with one en-suite and a reception room with an open-plan kitchen incorporating modern fitted kitchen appliances.

Flat 50 Pearson Building, 8 Station Road, Croydon CR0

2YT

Situated on Station Road in Croydon, this newly built apartment offers a convenient lifestyle with excellent transport links. The property features two bedrooms and one bathroom, providing ample living space. With a leasehold tenure and modern amenities such as central heating and an air source heat pump, this apartment is designed for comfort.

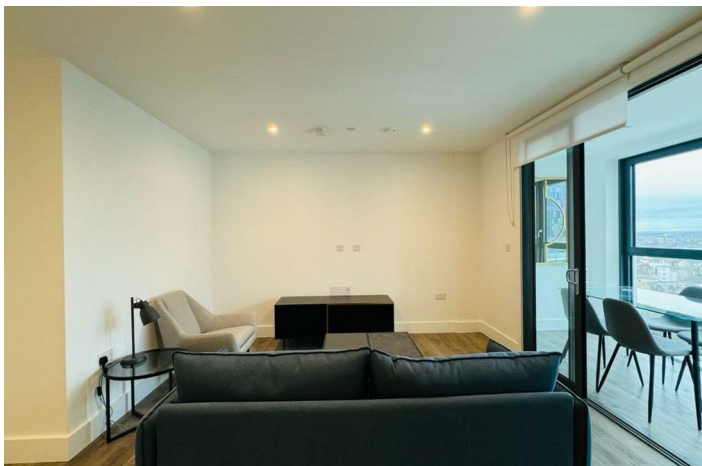
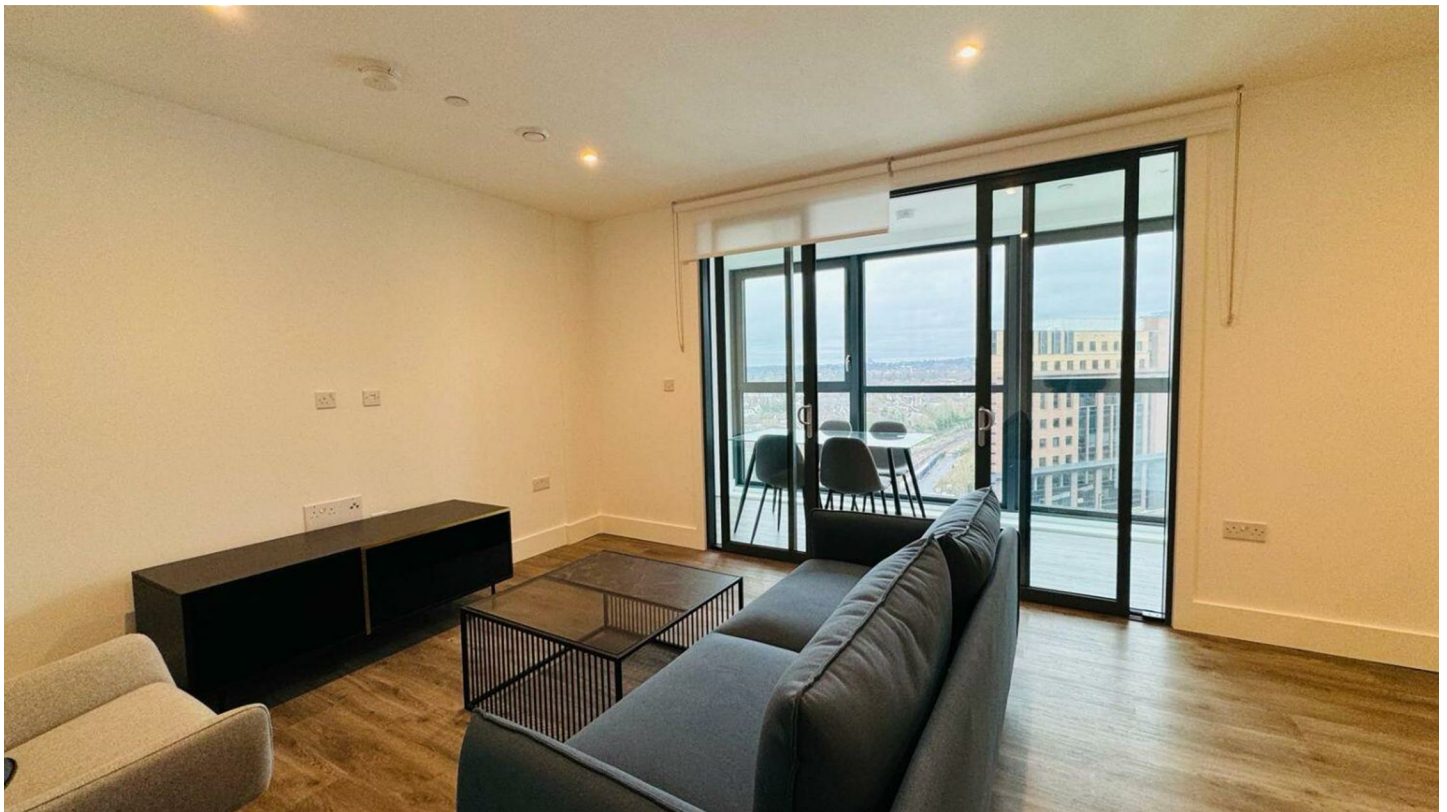
Residents will appreciate the communal facilities, including a 24-hour concierge service and a lounge with Wi-Fi access. The rooftop terrace and podium garden provide outdoor spaces to relax. There is also cycle storage available for those who prefer to travel by bike.

The location is ideal for commuters, with West Croydon Station just a short walk away. Nearby amenities include the Box Park and Whitgift Centre, offering shopping and dining options. East Croydon Train Station provides quick access to Central London, making this apartment an excellent choice for city professionals.

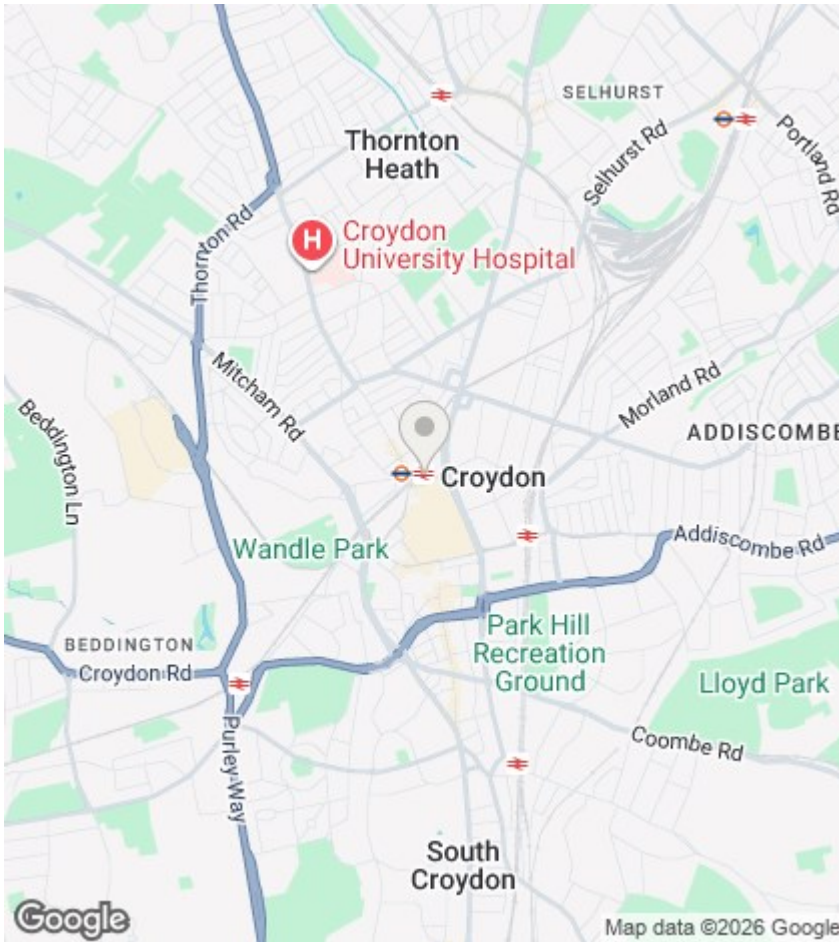
Don't miss this chance to rent in a prime location at an affordable price. Contact us today to learn more about this opportunity. Feature & Amenities: 24 HR concierge service, residents' lounge with WIFI, rooftop terrace and podium garden, cycle storage, and excellent transport links.



Council Tax Band: D







Directions

Viewings

Viewings by arrangement only. Call 0203 771 9141 to make an appointment.

EPC Rating:

B

| Energy Efficiency Rating | | Current | Potential |
|---|--|-------------------------|-----------|
| Very energy efficient - lower running costs | | | |
| (92 plus) A | | | |
| (81-91) B | | 86 | 86 |
| (69-80) C | | | |
| (55-68) D | | | |
| (39-54) E | | | |
| (21-38) F | | | |
| (1-20) G | | | |
| Not energy efficient - higher running costs | | | |
| England & Wales | | EU Directive 2002/91/EC | |